

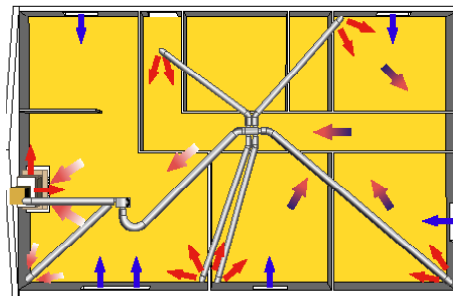


HOT AIR WITH FLAIR

Designed to optimise their slow-combustion wood heaters, Chazelles Fireplaces' hot air ducting system works by capturing radiant heat into the fireplace structure - produced by the wood heater - and then distributing it into different rooms within the home.

The system provides many benefits, including reducing the cost of heating, supplying a better and more homogeneous distribution of heat in the whole house, optimising the output efficiency of the fireplace, and reducing the temperature difference between the floor and ceiling.

The fan has a capacity of 300M3/H, depending on the amount of hot air blowing vents installed, providing the distribution of the hot air in selected rooms through a network of flexible insulated ducts. A by-pass vent is used to balance the network ducting



system. The by-pass vent is installed in the same room where the fireplace is located and is connected to a fan with a minimum of 2m of flexible aluminium pipe.

The proper balance of the installation can be checked by making sure the convected hot air vents are still putting out hot air when the fan is in operation. The fan itself is connected with a

minimum 3m flexible aluminium pipe - starting close to the firebox inside the fireplace for the Radiant firebox range or directly connected to the firebox for the Grande Vision or Design firebox ranges. When using the hot air ducting system, it is imperative to have the firebox door closed.

Depending on the number of rooms, a "T" or "Y" section is installed in the middle of the ducting insulated pipes network to dispatch hot air in each room. The hot air ducting system must be installed by a qualified, professional installer.

FOR MORE INFORMATION

Chazelles Fireplaces
chazellesfireplaces.com.au
 A 595 Princes Hwy, Tempe NSW
 P 02 9550 6290
 E info@chazellesfireplaces.com.au